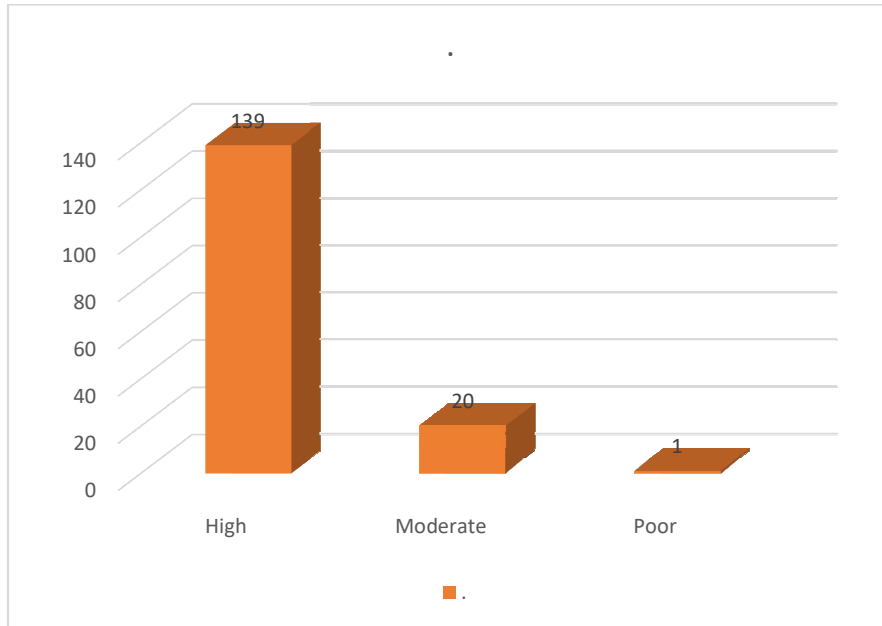


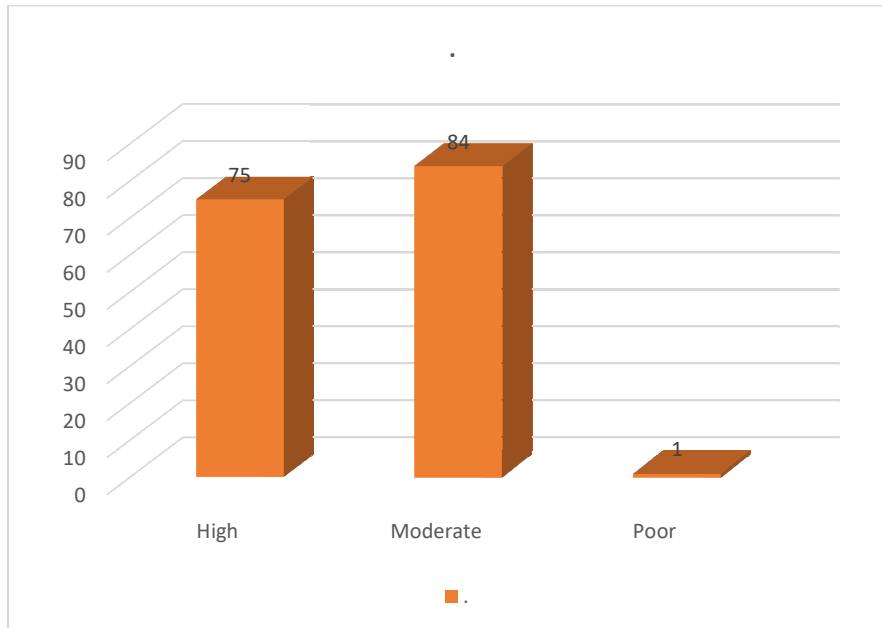
Shri Shivaji College of Arts, Commerce and Science, Kandhar

Feedback Analysis of Students - 2022-23

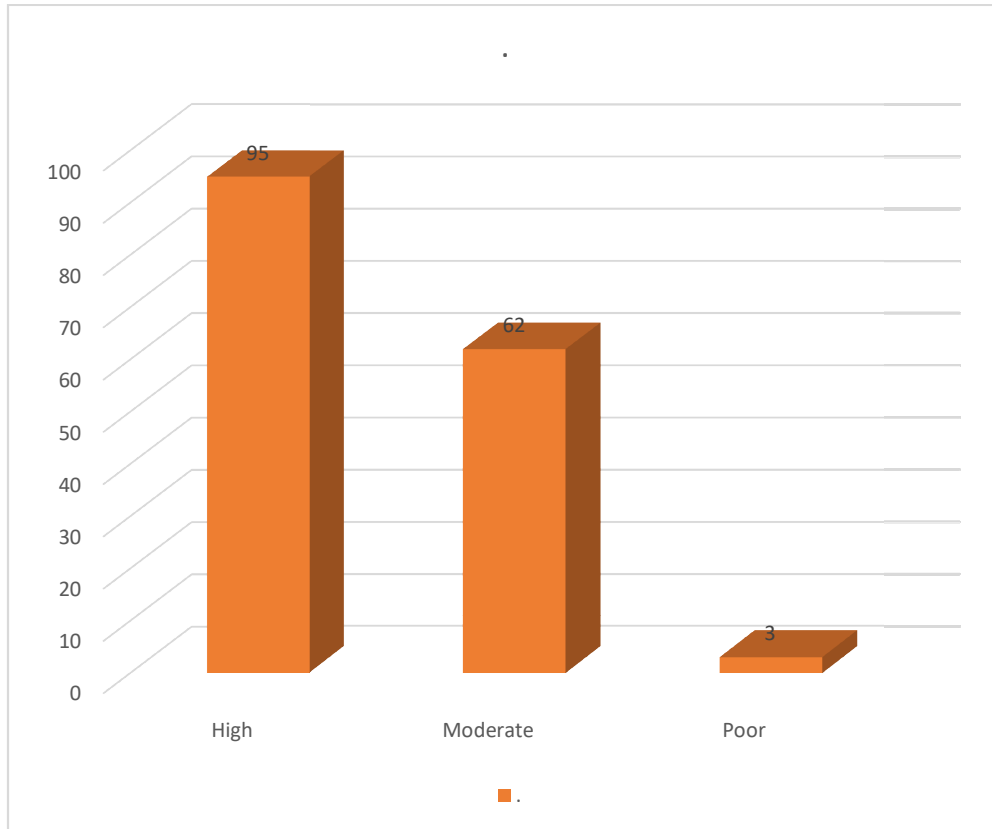
1. Curriculum / syllabus that you have gone through the last academic year



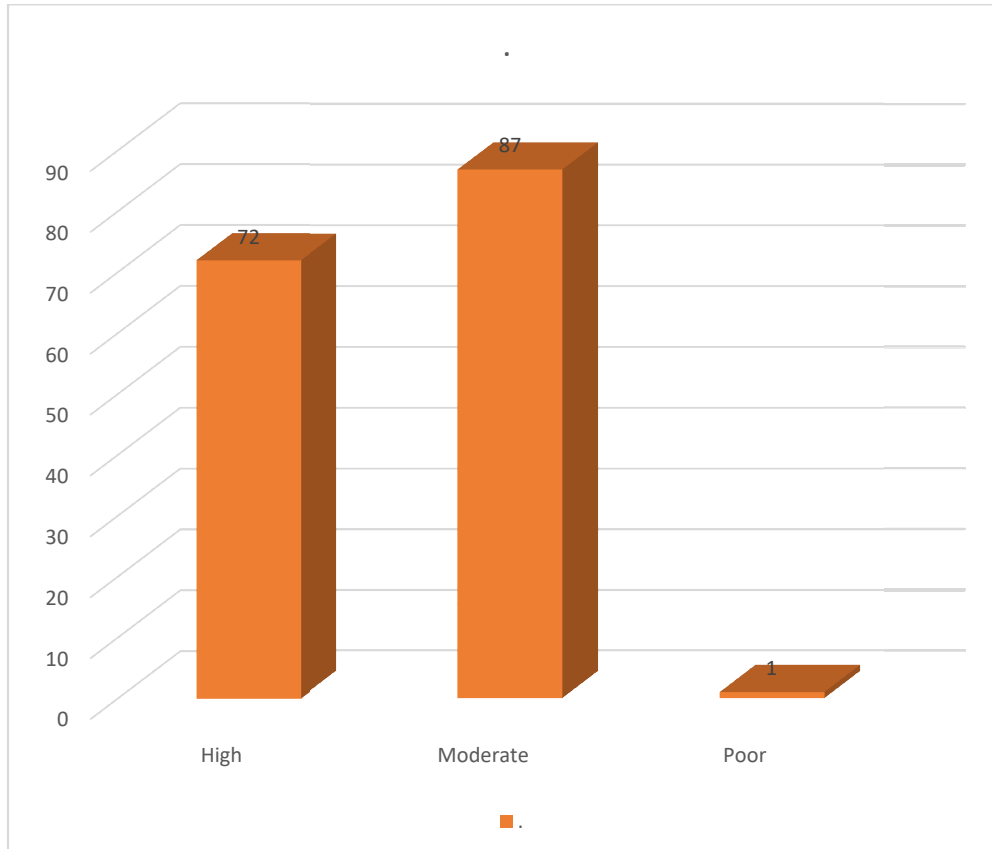
2. Clarity about the course objectives



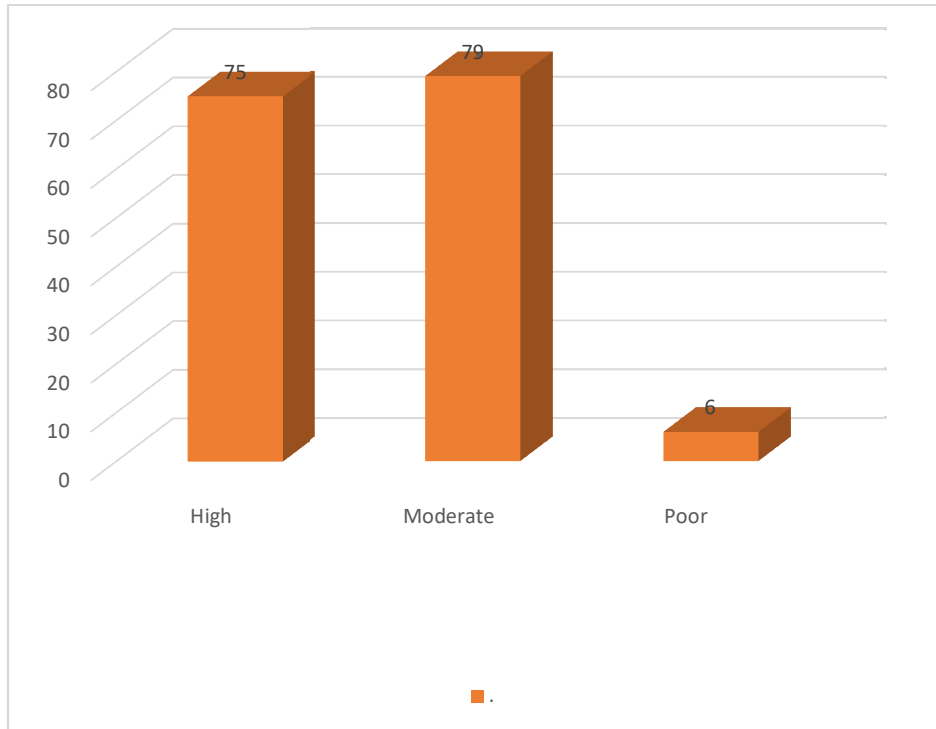
3. Structure of the syllabus



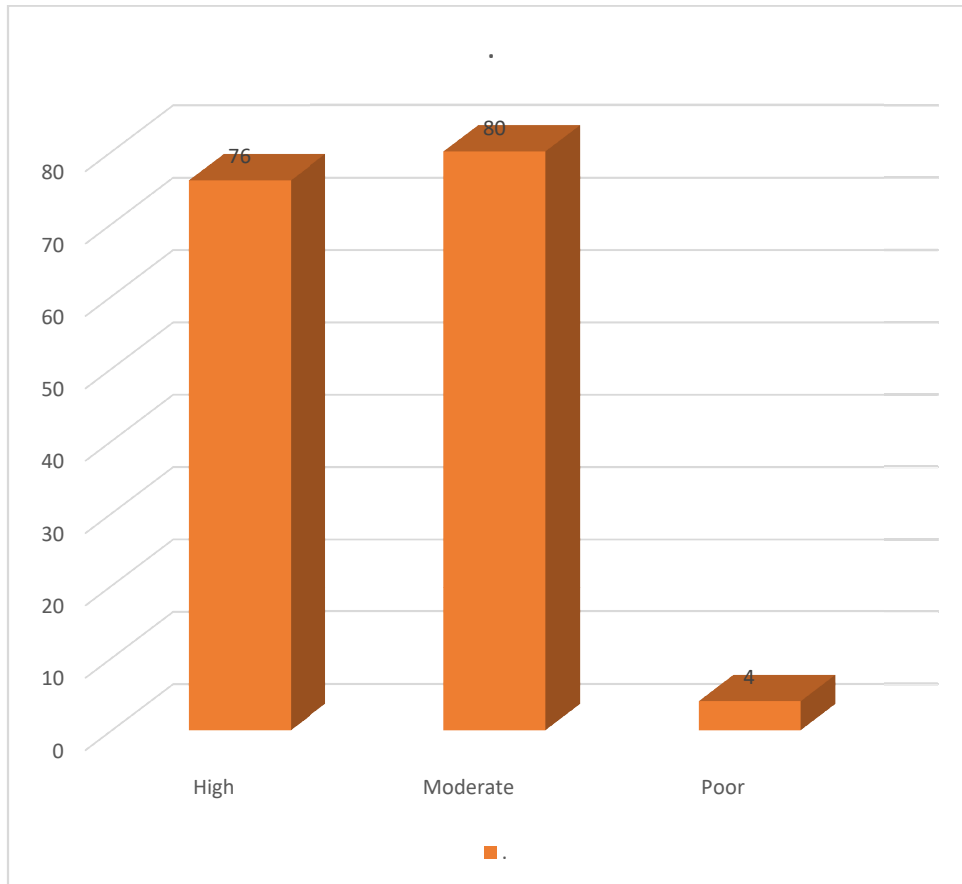
4. Electives offered in terms of stream specialization



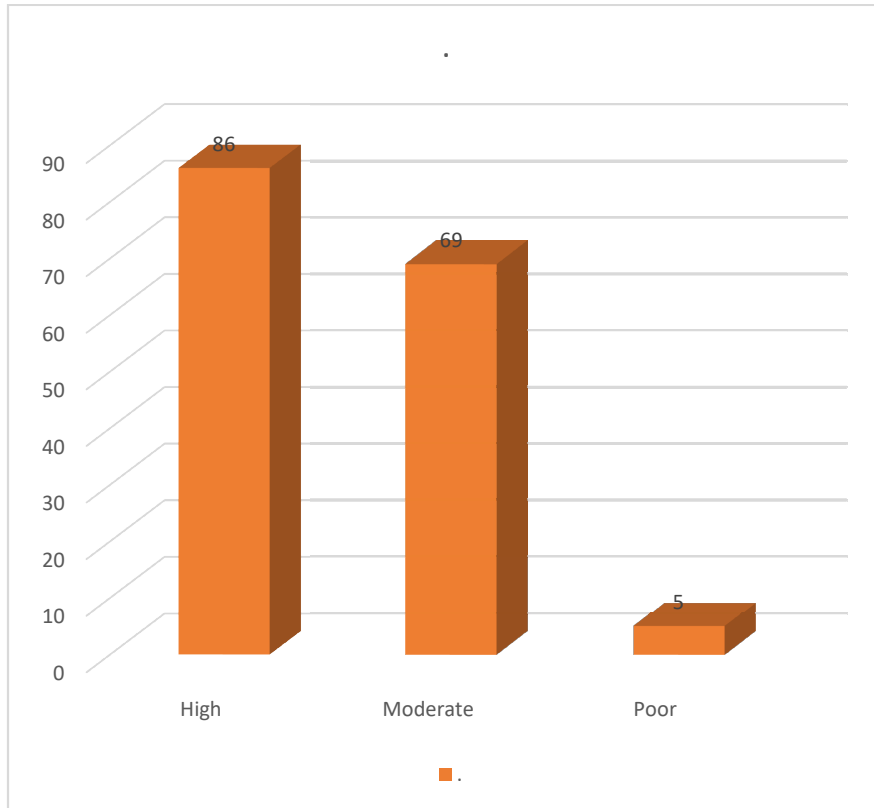
5. Electives offered in terms of technological advancement



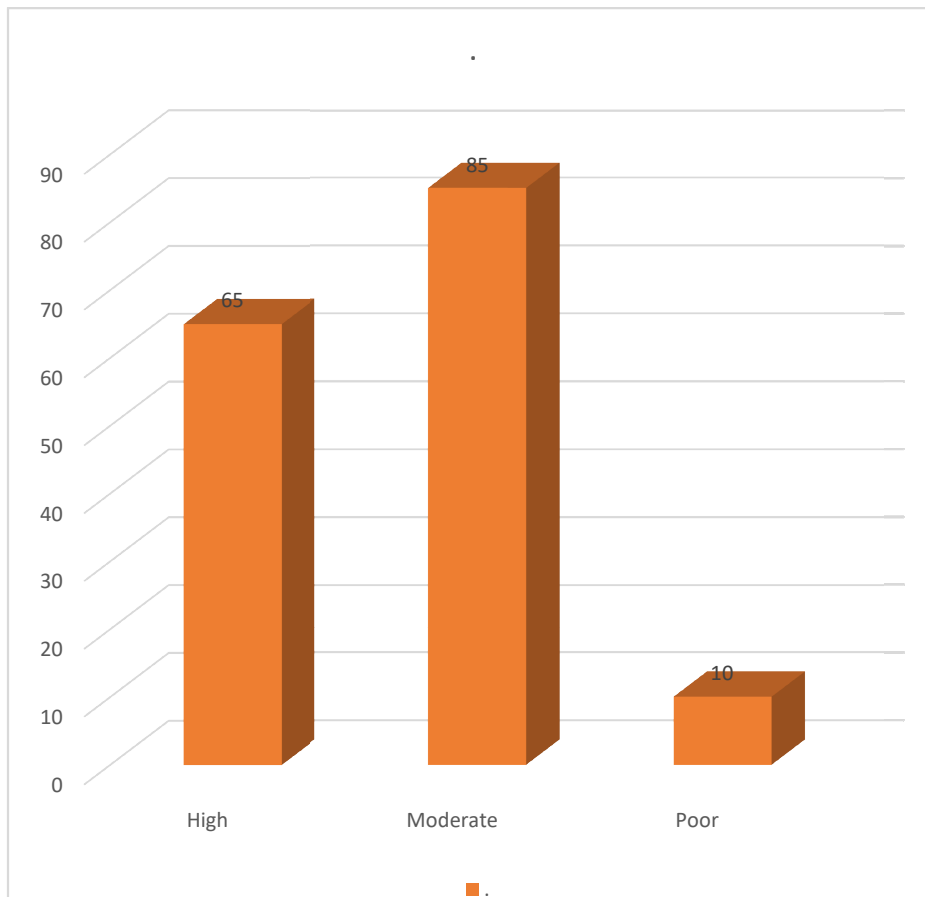
6. Curriculum encouraging for extra learning and self-learning



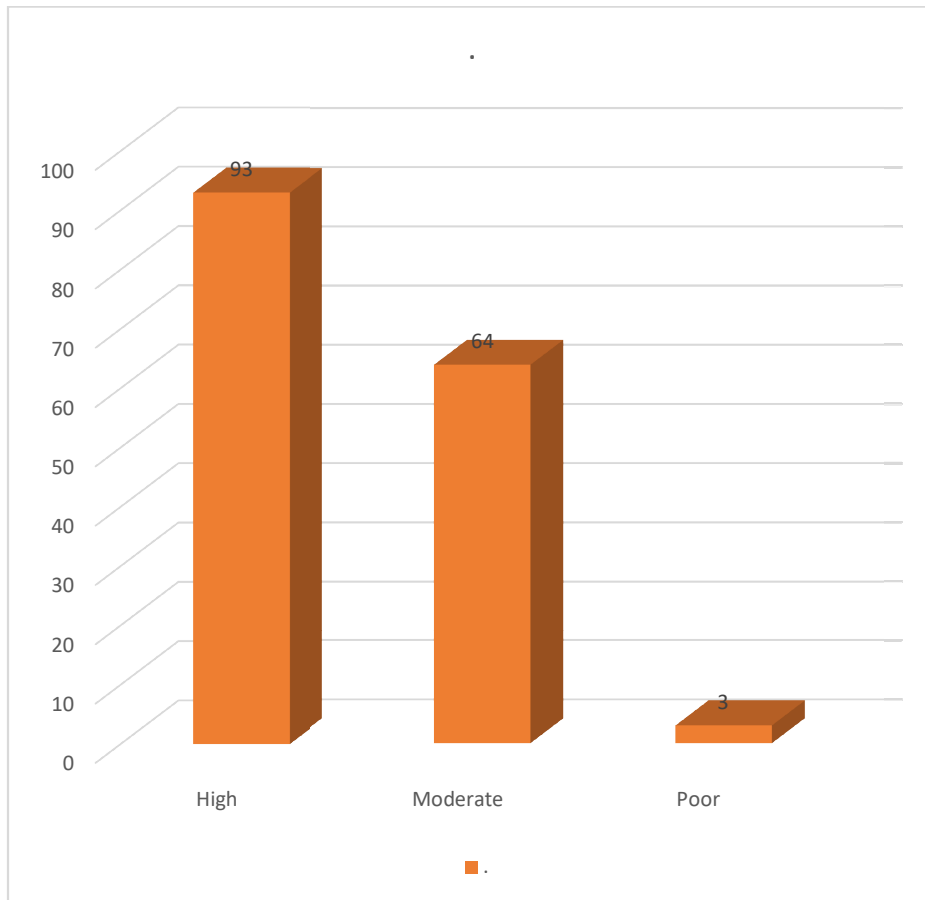
7. Exposure to practical learning or field work



8. Domain used for designing / performing the experiment in the laboratory



9. Weightage given to employability skills



10. Overall rating on curriculum

